

# 富士山の風の観測

係留気球観測

日程： 2013年9月25日～28日  
場所： 山梨県 山中湖(研修所)

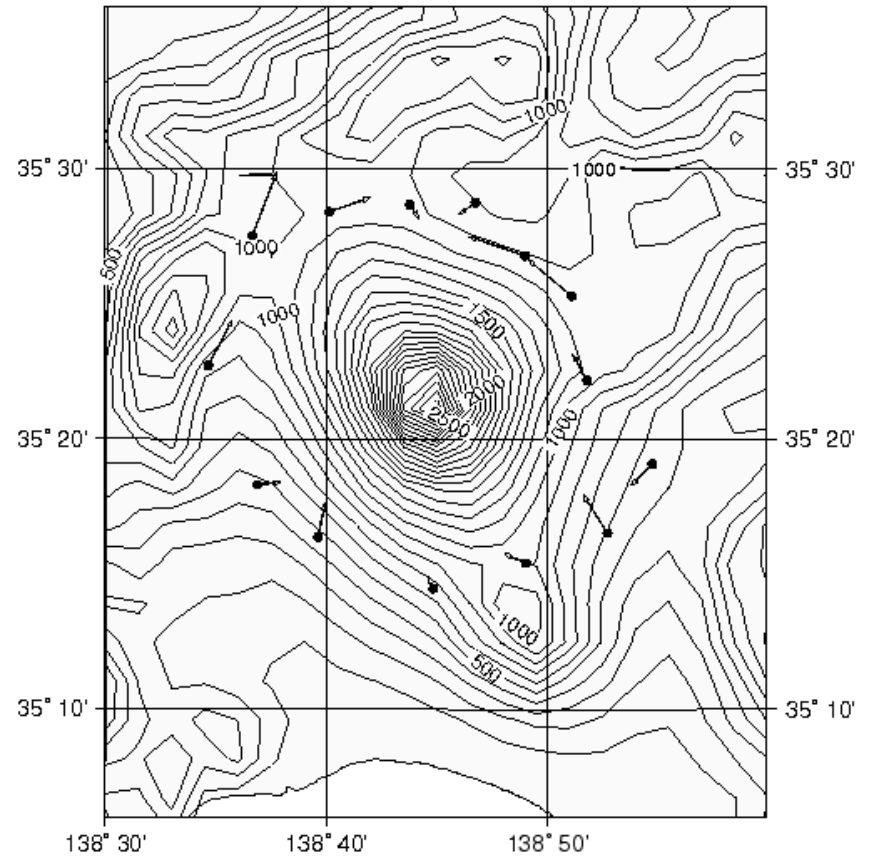


# 大型バスで富士山を周回



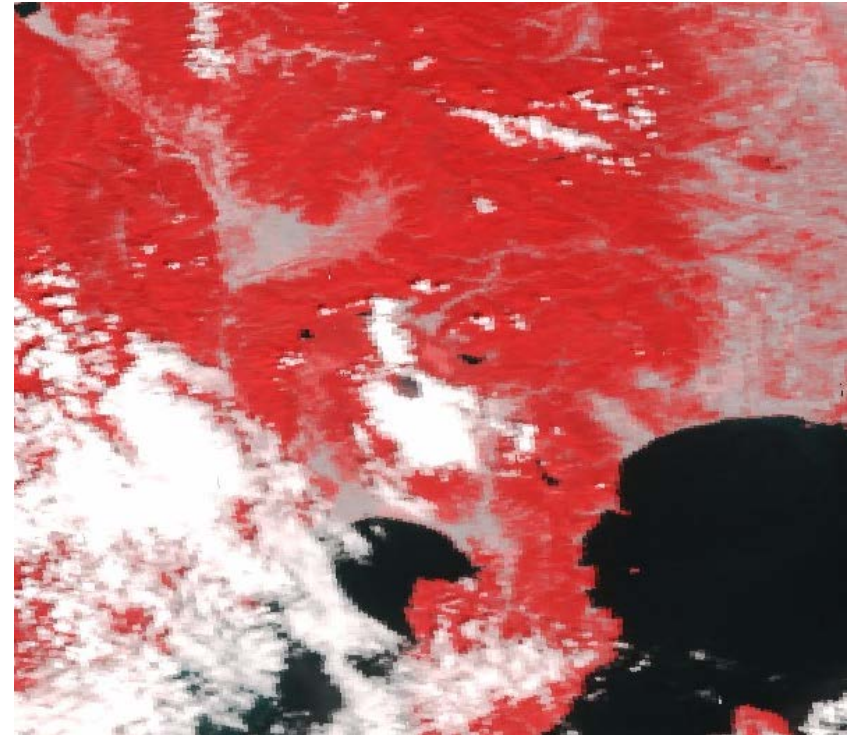
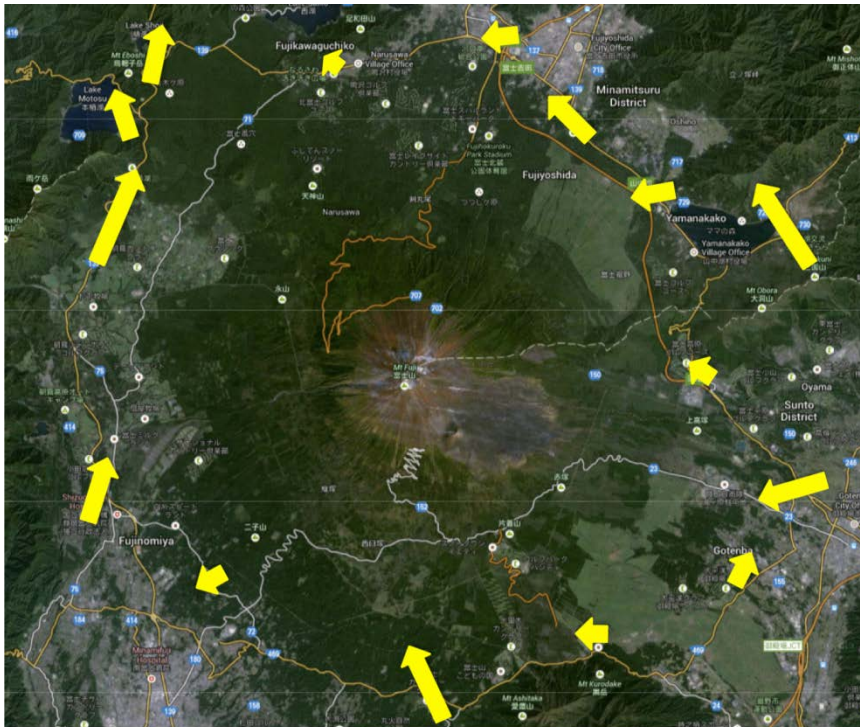
Mt. Fuji

Surface Wind





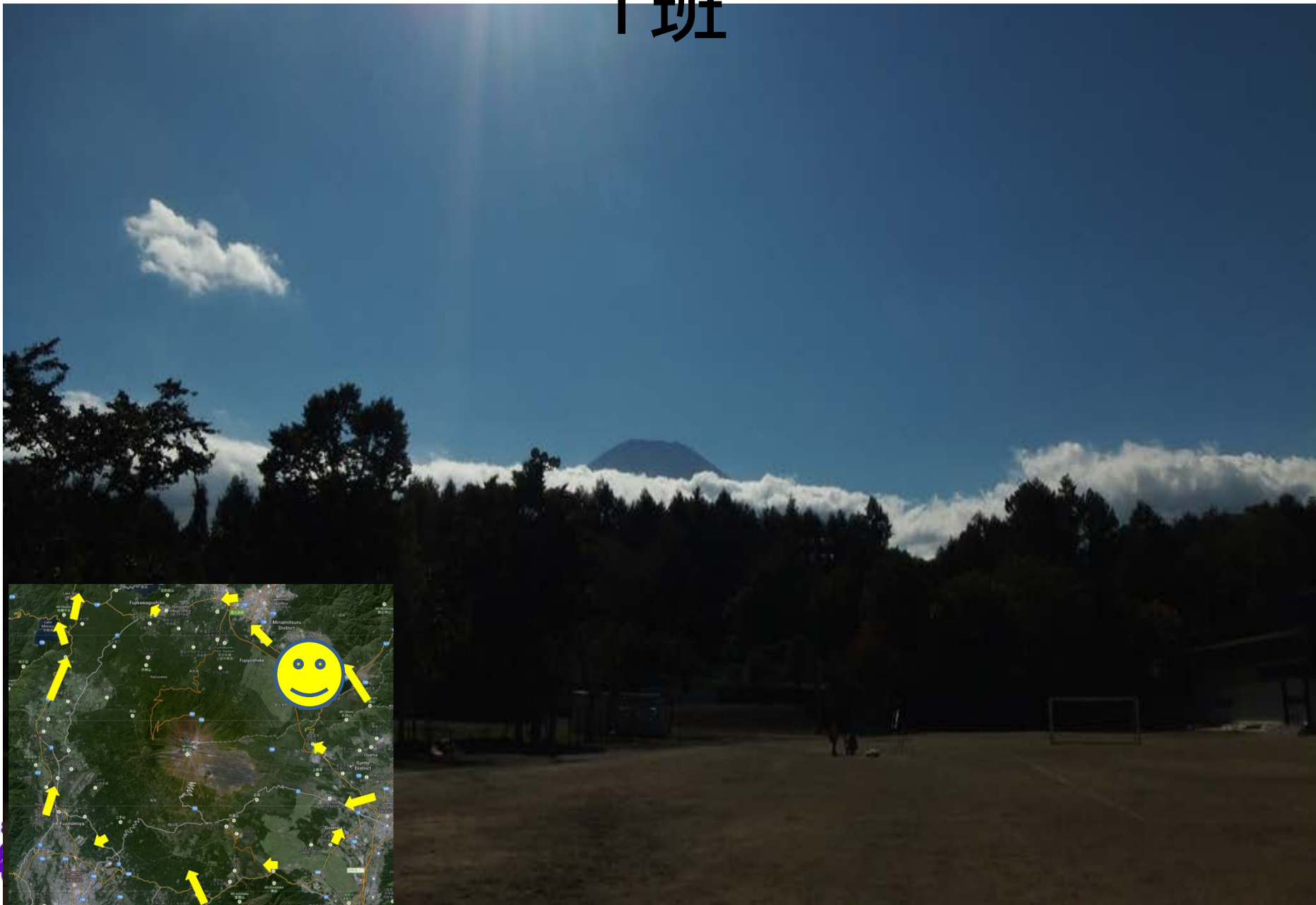
# 衛星Modis 13:31 拡大 周囲15地点で観測



# O班

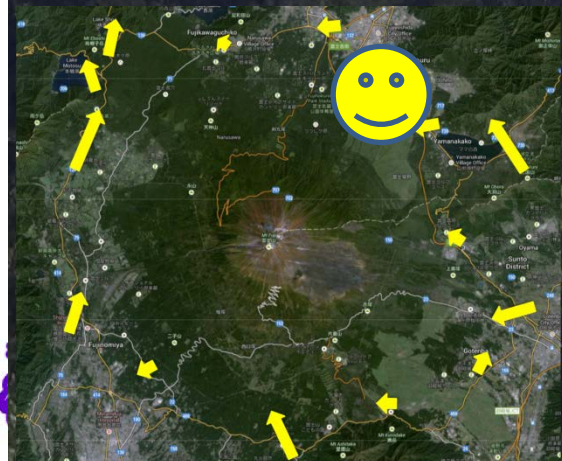


# 1班

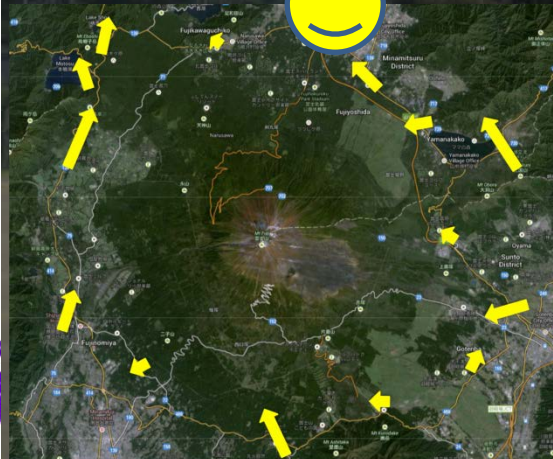




# 2班

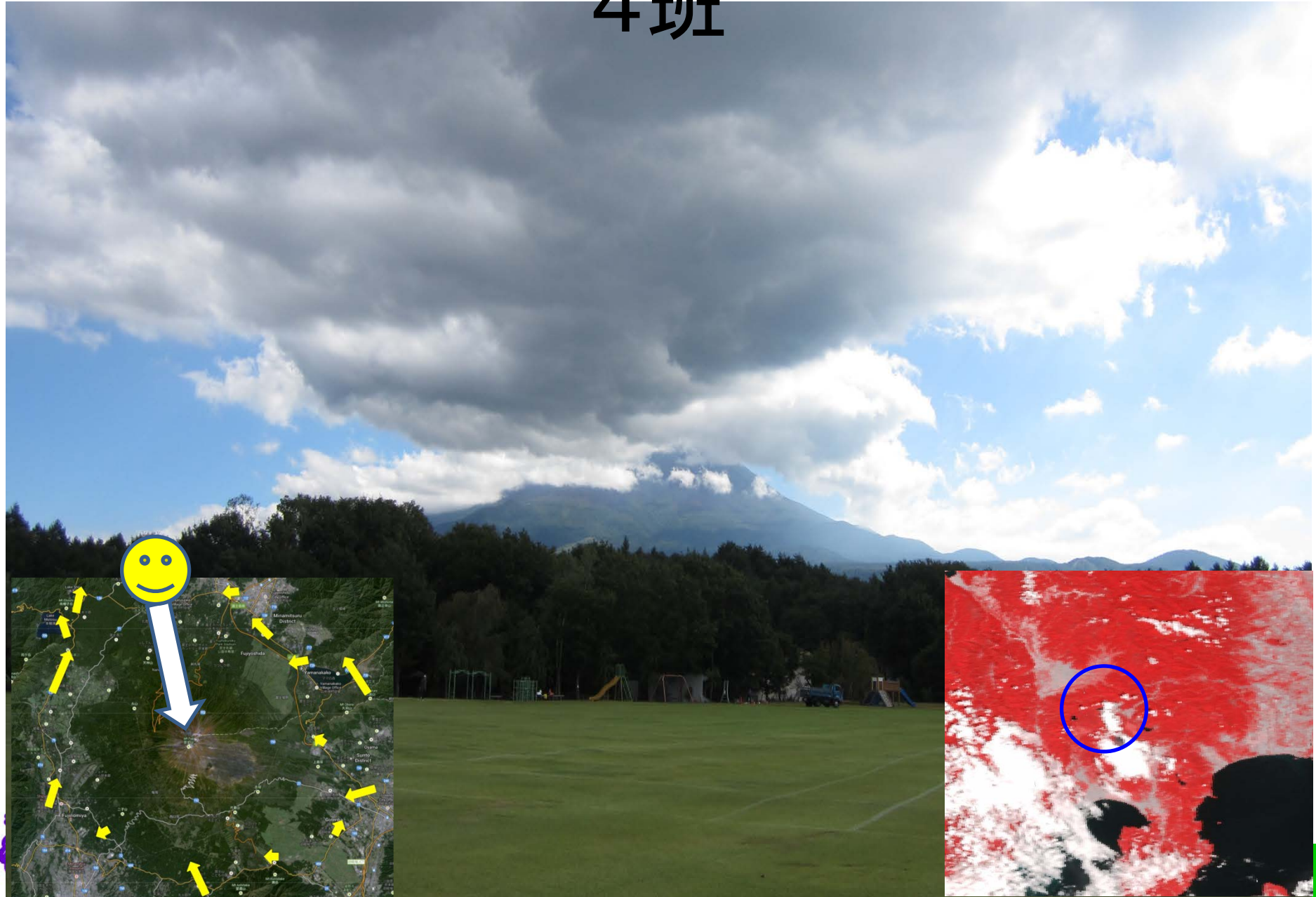


# 3班





# 4班

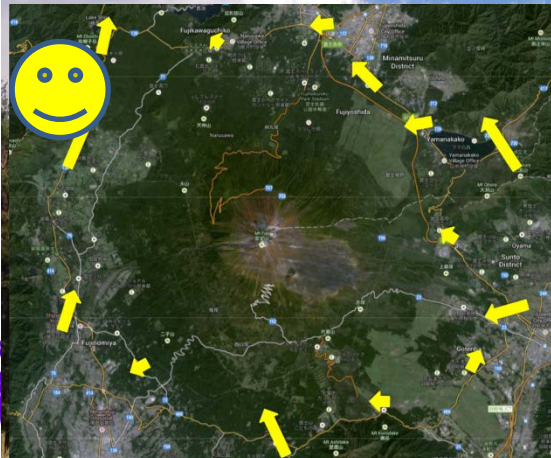




# 5班

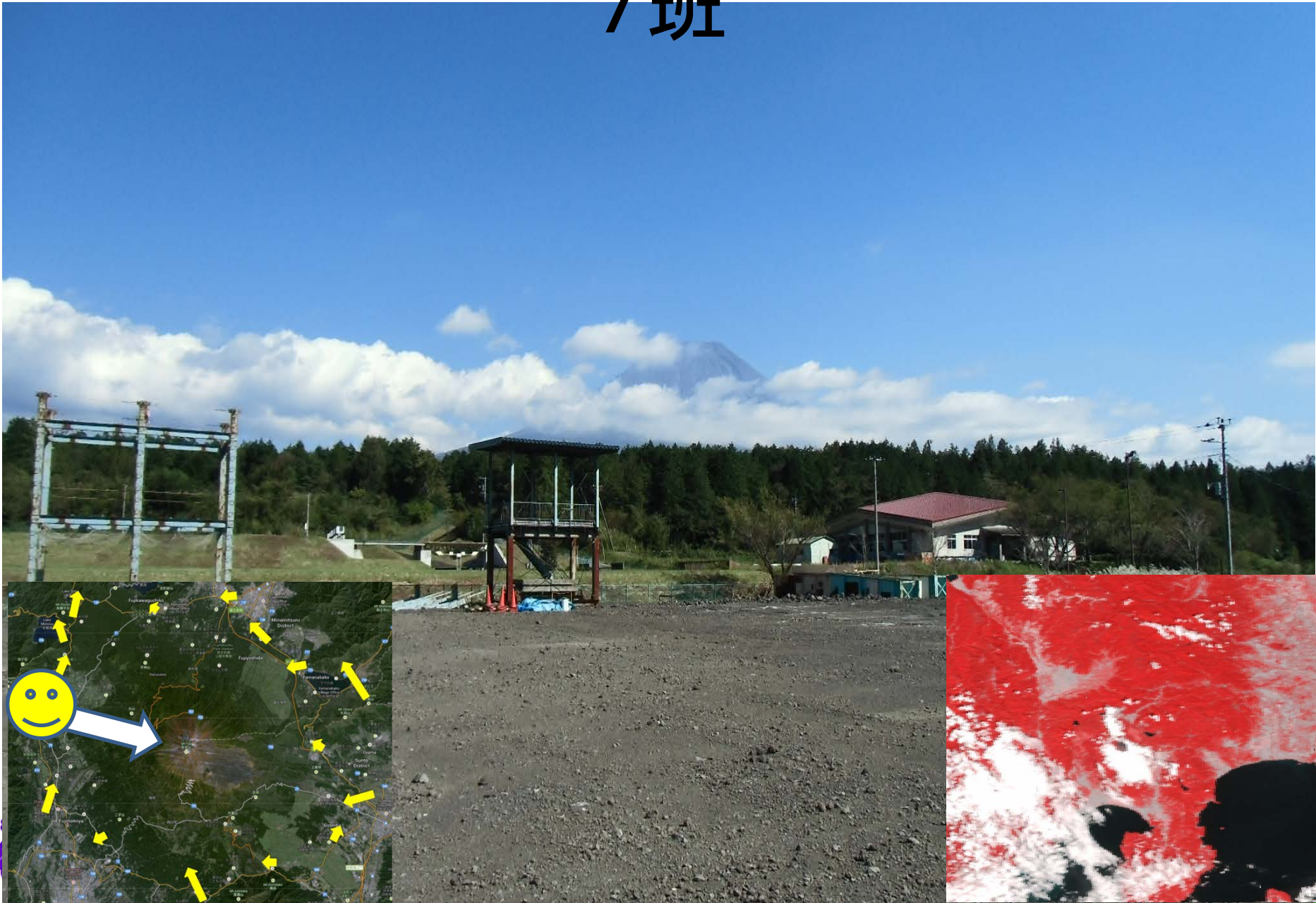


# 6班





# 7班



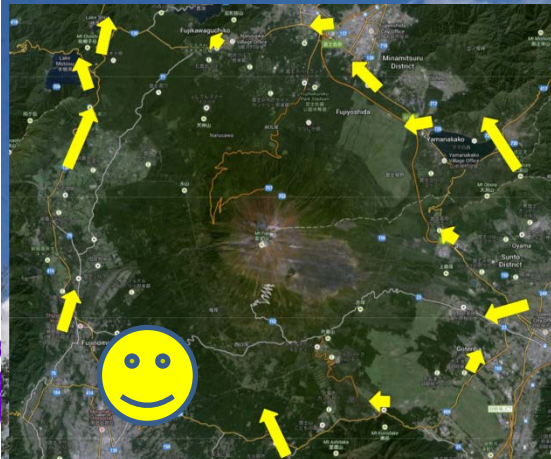


# 8班

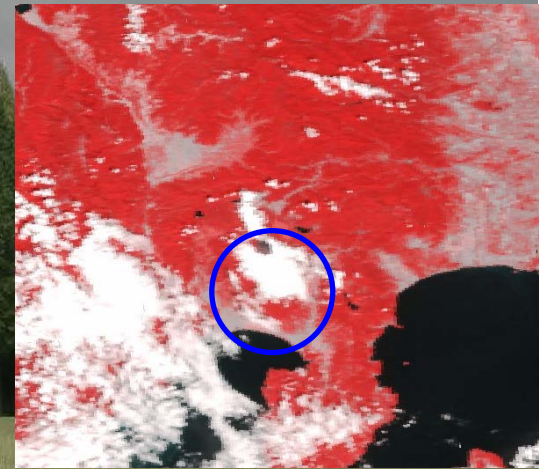
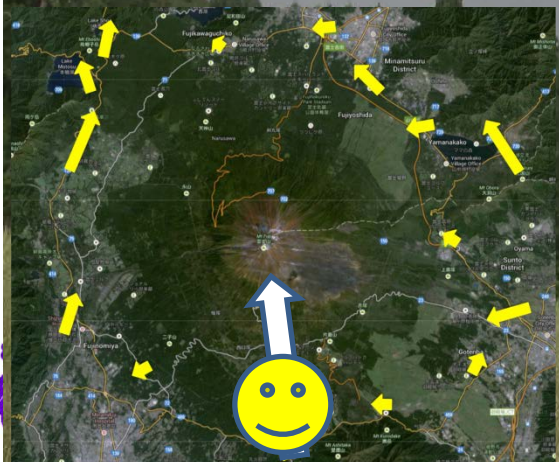




# 9班

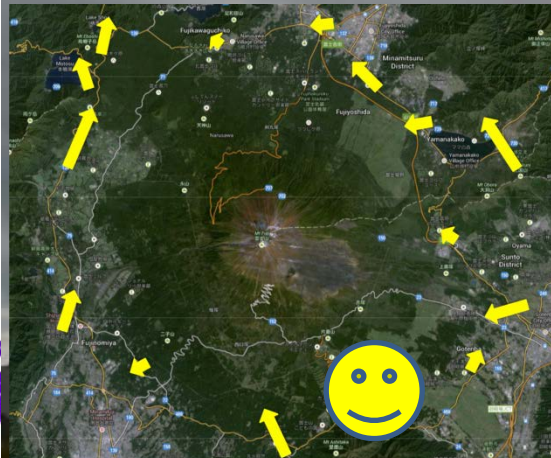


# 10班





# 11班



# 12班





# 13班



# 14班

